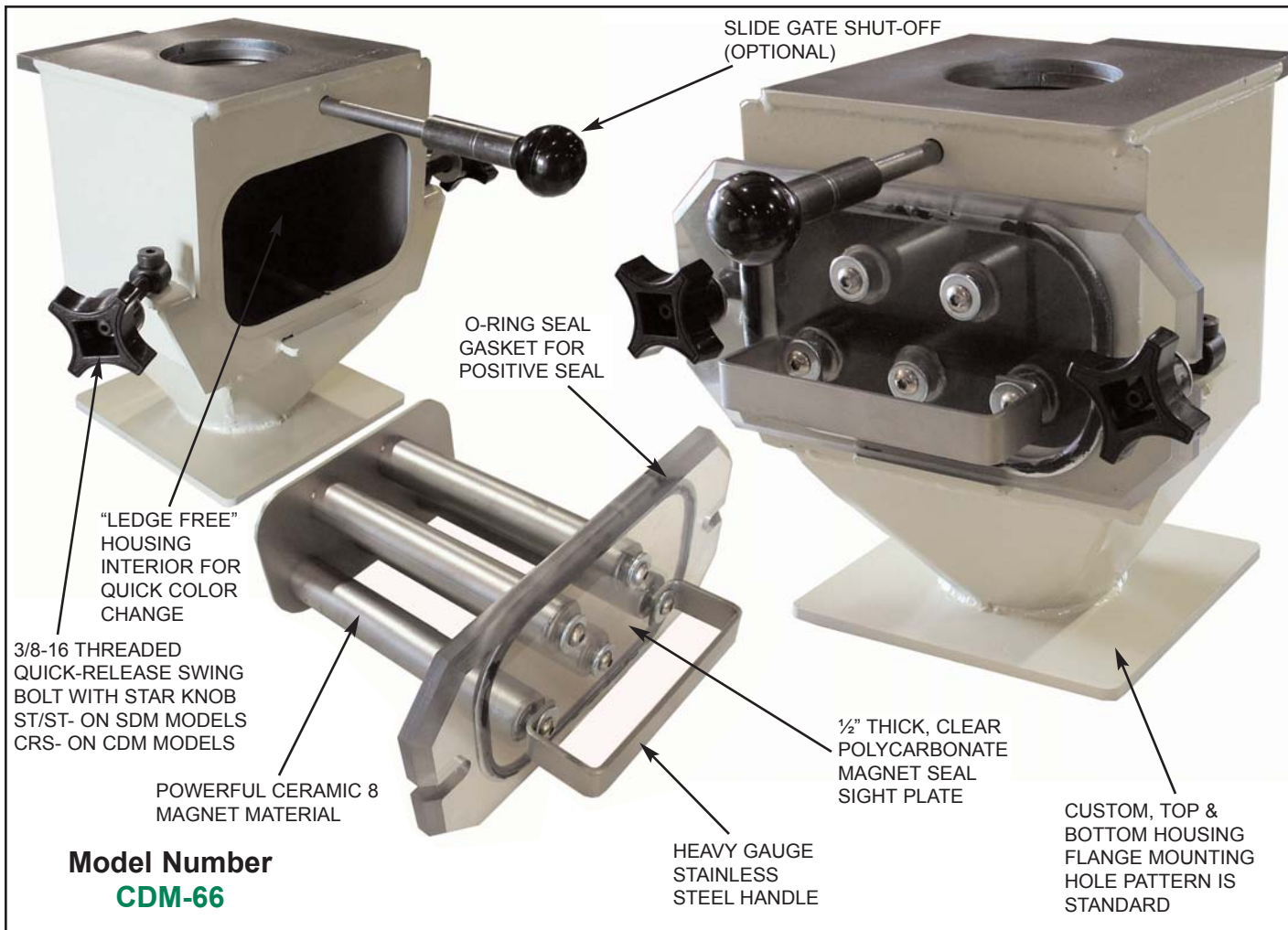




# Drawer Magnet and Housing

Carbon Steel Series: CDM  
Stainless Steel Series: SDM



**Application:** MPI's Drawer Magnets are designed to provide optimum tramp metal protection for plastic injection molding and extruding equipment. CARBON STEEL (CDM Series) and STAINLESS STEEL (SDM Series) DRAWER MAGNETS provide an economical solution which provides many benefits and features not found in comparable products. CDM and SDM series Drawer Magnets are ideal for use with plastic regrind materials, which may contain higher amounts of ferrous contaminant's. Use of MPI's heavy-duty CDM or SDM series Drawer Magnets can reduce equipment

maintenance, prevent equipment damage, and increase quality parts production.

**Operation:** CDM and SDM Series Drawer Magnets are installed between feed hopper and machine throat opening providing constant magnetic protection. Both resin flow and contaminant collection can be easily monitored through the clear polycarbonate Drawer face. Magnet cleaning is accomplished by loosening the quick-release swing-bolt latches and removing the magnet drawer, which can be cleaned of captured ferrous tramp metal.

Got a question about Metal Control or Material Handling Products...

Ask the  
**Magnet Man**



[www.magnetmanusa.com](http://www.magnetmanusa.com)

## Magnetic Products, Inc.

Providing Magnetic Solutions for the  
Material Handling Industry

800-544-5930

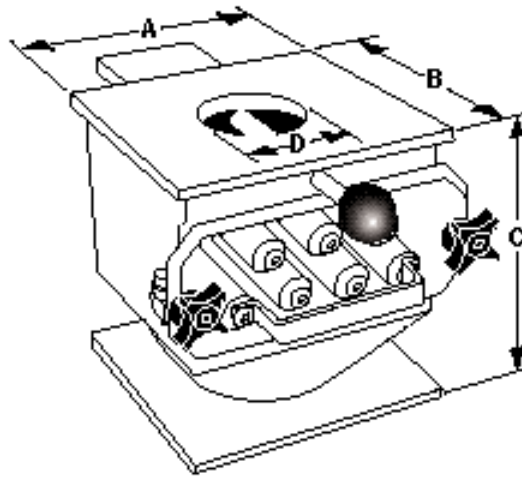


# Providing Magnetic Solutions For the Material Handling Industry

### MODEL NUMBER CODE

CDM - 44 - SG

- SLIDE GATE (OPTIONAL)
- 4" x 4" INTERIOR
- DRAWER MAGNET
- CARBON STEEL



### CDM SERIES SPECIFICATIONS

CDM MODEL NUMBER	WIDTH DIM. "A"		LENGTH DIM. "B"		HEIGHT DIM. "C"		NUMBER OF MAGNETIC TUBES	MINIMUM DIAMETER DIM. "D"		MAXIMUM DIAMETER DIM. "D"		UNIT WEIGHT*	
	IN.	MM	IN.	MM	IN.	MM		IN.	MM	IN.	MM	LBS.	KG
CDM-44	4.375	143	4.375	143	10.0	254	3	1.380	34.9	3.0	76.2	34	15.5
CDM-66	6.375	194	6.375	194	10.0	254	5	2.000	50.8	3.50	88.9	48	21.8
CDM-88	8.375	244	8.375	244	10.0	254	7	3.500	88.9	4.50	114.3	64	29.1
CDM-1010	10.375	292	10.375	292	11.0	279	9	4.625	117.5	6.50	165.1	68	30.9

\* Unit weight does not include any add-on options. Note: Specifications subject to change.

#### Standard Features:

- Powerful Ceramic 8 permanent magnetic material
- 1/2" thick clear polycarbonate drawer face for easy inspection
- Two rows of 1" dia. magnetic tubes on 2" centers to maximize magnetic filtration
- Interior housing wall product flow diverters
- Pre-drilled or tapped holes for easy installation
- Heavy-duty 3/8-16 threaded quick-release swing bolt latches with large star knob for easy operation during maintenance
- O-Ring gasket

#### Options:

- Slide gate product shut-off
- Purge hopper
- Liquid dispensing system
- Extended top and bottom flanges
- Custom paint finishes
- Low-Profile designs for restricted areas

## -Custom Sizes & Configurations Available-

For more information, please contact your local sales representative or our customer service representatives at 1-800-544-5930 or [info@mpimagnet.com](mailto:info@mpimagnet.com).

### Magnetic Products Inc.

P.O. Box 529 • 683 Town Center Dr. • Highland, MI • 48357

TOLL FREE: 800-544-5930 • 248-887-5600

FAX: 248-887-6100

EMAIL: [info@mpimagnet.com](mailto:info@mpimagnet.com)

[www.mpimagnet.com](http://www.mpimagnet.com)

DISTRIBUTED BY: