



Low Profile Drawer Magnet

Carbon Steel Series: CDM-LP
Stainless Steel Series: SDM-LP

Model Shown
CDM-66-LP-SG



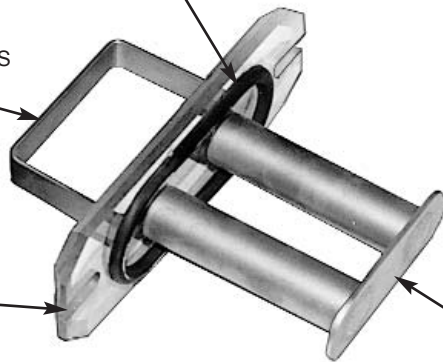
OPTIONAL SLIDE GATE SHUT-OFF

3/8-16 THREADED
QUICK-RELEASE SWING
BOLT WITH STAR KNOB
ST/ST- ON SDM MODELS
CRS- ON CDM MODELS

O-RING SEAL GASKET
FOR POSITIVE SEAL

HEAVY GAUGE STAINLESS
STEEL HANDLE

1/2" THICK, CLEAR
POLYCARBONATE
MAGNET SEAL
SIGHT PLATE



"LEDGE FREE"
HOUSING
INTERIOR FOR
QUICK COLOR
CHANGE

POWERFUL CERAMIC 8
MAGNET MATERIAL

CUSTOM, TOP &
BOTTOM HOUSING
FLANGES MOUNTING
HOLE PATTERN IS
STANDARD

Application: MPI's LOW PROFILE (LP Series) Drawer Magnets are custom fabricated to provide optimum tramp metal protection where headroom is critical for plastics injection molding and extruding equipment. CDM-LP (Carbon Steel Construction) & SDM-LP (Stainless Steel Construction) Drawer Magnets supply exceptional magnetic performance with powerful Ceramic 8 magnetic material or optional high energy Rare Earth magnetic material (SDM-LP models only). LP Series Drawer Magnets are ideal for use with equipment requiring special mounting configurations

and locations. Use of MPI's Low Profile Drawer Magnets can reduce maintenance, prevent equipment damage and increase production of quality parts.

Operation: Low Profile Drawer Magnets are installed between the feed hopper and machine throat opening providing constant magnetic protection. Both resin flow and contaminant collection can be easily monitored through the clear polycarbonate Drawer face. Magnet cleaning is done by loosening the quick release swing bolt latches and removing the magnet drawer, which can be cleaned of captured ferrous tramp metal.

Got a question about Metal Control
or Material Handling Products...

Ask the
**Magnet
Man**



www.magnetmanusa.com

Magnetic Products, Inc.

Providing Magnetic Solutions for the
Material Handling Industry

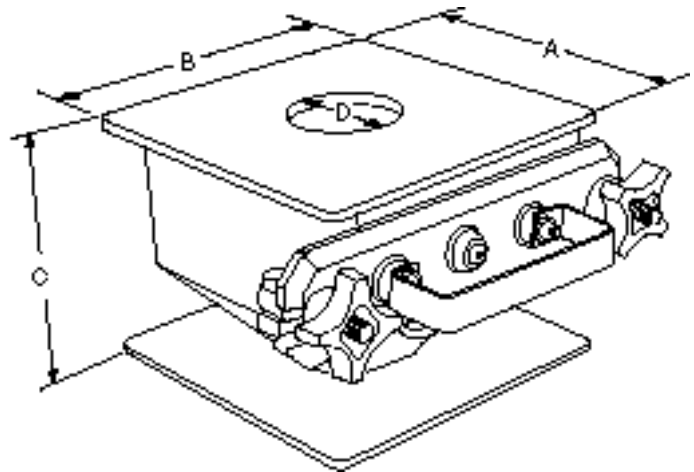
800-544-5930



Providing Magnetic Solutions For the Material Handling Industry

(C) (S) DM - 66 - LP - SG

- Slide Gate (Optional)
- Low Profile
- With 6" x 6" interior
- Drawer Magnet
- Stainless Steel
- Carbon Steel



Note: Specifications subject to change

LOW PROFILE DRAWER MAGNET SPECIFICATIONS

CDM SDM MODEL NUMBERS	APPROX. UNIT'S WEIGHT		LENGTH "A"		WIDTH "B"		HEIGHT "C"*		NUMBER OF MAGNETIC TUBES	MIN. PRODUCT OPENING DIAMETER "D"		MAX. PRODUCT OPENING DIAMETER "D"	
	LBS	KG	IN.	MM	IN.	MM	IN.	MM		IN.	MM	IN.	MM
CDM-44-LP	30	13.6	4.375	140	4.375	140	4.5	114.3	2	1.25	31.8	3.0	76.2
SDM-44-LP	21	9.5											
CDM-66-LP	39	17.6	6.375	191	6.375	191	4.5	114.3	3	2.00	50.8	3.5	88.9
SDM-66-LP	26	11.7											
CDM-88-LP	53	24.0	8.375	244	8.375	244	4.5	114.3	4	3.50	88.9	4.5	114.3
SDM-88-LP	38	17.2											

Standard Features:

- Powerful Ceramic 8 Permanent Magnetic Tubes.
- Magnetic tubes welded and sealed to back plate.
- Welded latch assemblies with star knob for easy operation.
- O-Ring gasket for positive sealing.
- 1/2" thick polycarbonate inspection window.
- Heavy-duty top plate can be drilled and tapped to accept your material's hopper bolt pattern.

Options:

- Slide Gate shut-off.
- 3/8" or 1/2" thick top and bottom plates available, to accommodate larger drill or tap sizes.
- Liquid dispensing system.
- Purge hopper.
- Rare Earth magnetic material (Stainless Steel Models Only).

-Custom Sizes & Configurations Available-

For more information, please contact your local sales representative or our customer service representatives at 1-800-544-5930 or info@mpimagnet.com.

Magnetic Products Inc.

P.O. Box 529 • 683 Town Center Dr. • Highland, MI • 48357

TOLL FREE: 800-544-5930 • 248-887-5600

FAX: 248-887-6100

EMAIL: info@mpimagnet.com

www.mpimagnet.com

DISTRIBUTED BY: