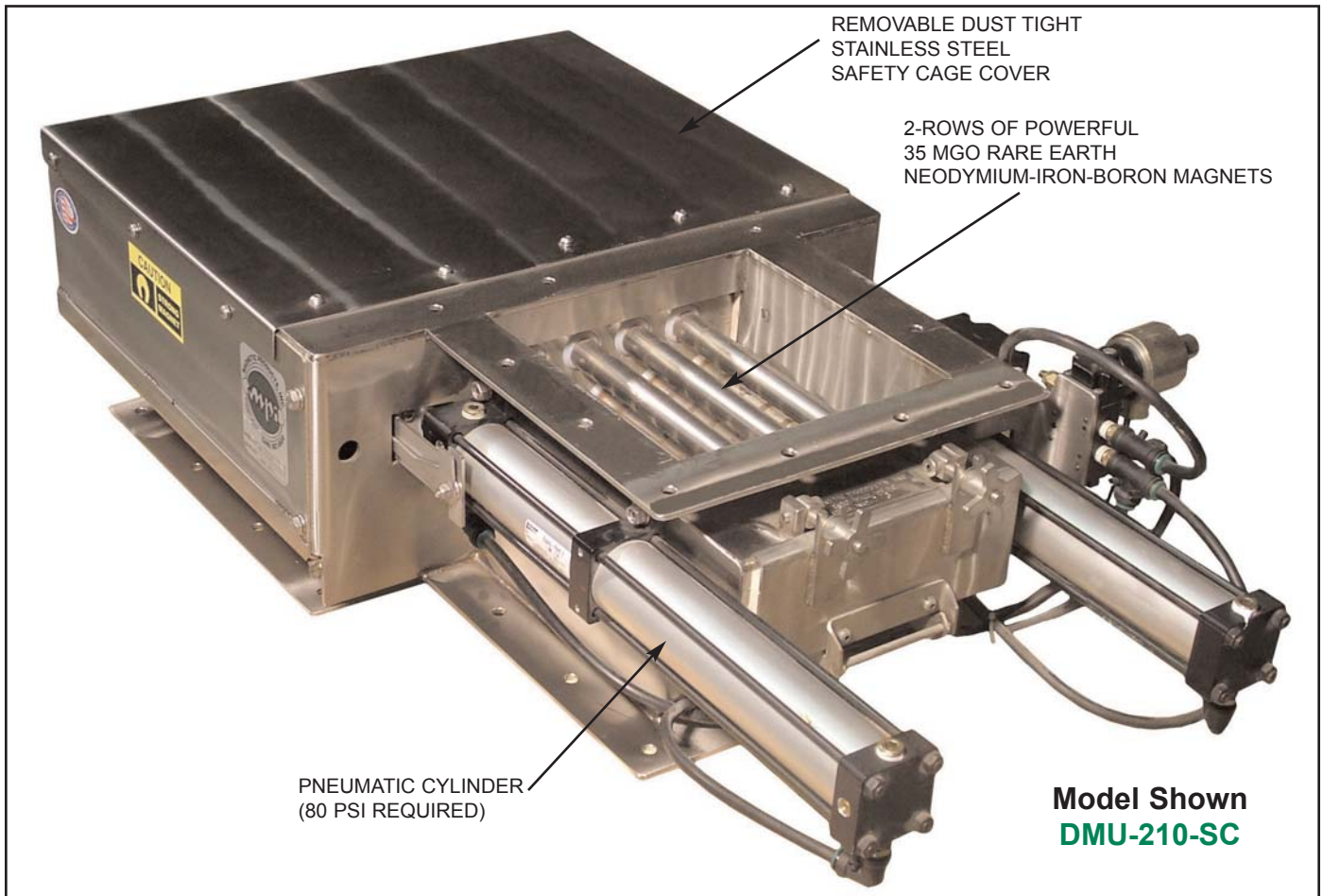




200 Series Drawer Magnet & Housing Self-Cleaning Series: DMU-200-SC



REMOVABLE DUST TIGHT
STAINLESS STEEL
SAFETY CAGE COVER

2-ROWS OF POWERFUL
35 MGO RARE EARTH
NEODYMIUM-IRON-BORON MAGNETS

PNEUMATIC CYLINDER
(80 PSI REQUIRED)

Model Shown
DMU-210-SC

Application: MPI's SELF-CLEANING 200 SERIES DRAWER MAGNET (DMU-200-SC) and Housing separators utilize a "Type A" magnetic circuit, which is ideally suited to capture small contaminant's such as wire, metal shavings and metal wear contaminant's from dry powder or granular free-flowing product streams in gravity-fed vertical chutes. This 200 Series, DMU-SC Drawer Magnet protects processing equipment such as milling, extruding and mixing while insuring high product quality standards with automatic magnet cleaning for maximum magnet performance.

Operation: The product stream flows through a series of 1" diameter magnetic tubes designed to create an extremely effective magnetic circuit. Each row of magnetic tubes is staggered to prevent bridging or choking of the product stream and maximize magnetic filtration as product flows through the housing. Tramp metal contaminant's are attracted to the magnetic tubes. The pneumatically operated cleaning system safely removes tramp metal from the product stream to a disposal area outside the product flow area.

Got a question about Metal Control
or Material Handling Products...

Ask the
**Magnet
Man**



www.magnetmanusa.com

Magnetic Products, Inc.

Providing Magnetic Solutions for the
Material Handling Industry

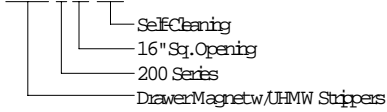
800-544-5930



Providing Magnetic Solutions For the Material Handling Industry

Model Number Coding Example:

DMU-216-SC

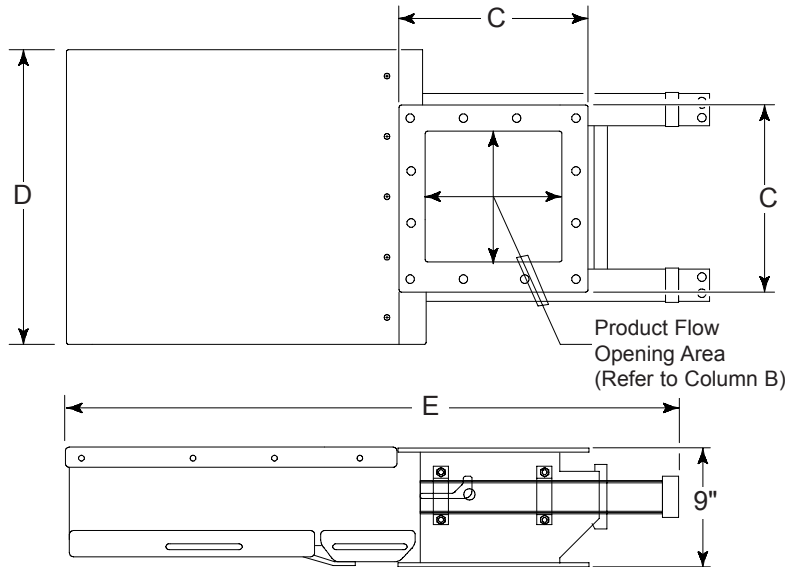
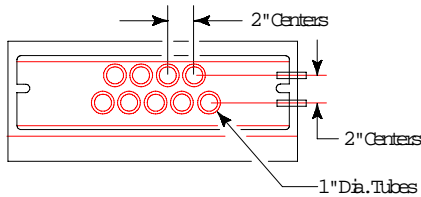


Spout's Product Flow Area Opening Calculations:

For Round Spout, Area = $3.14 \times R^2$

For Square Spout, Area = L x W

Refer to Column D below to cross reference Spout's maximum product flow opening area to DMU model number.



DMU-200-SC SELECTION GUIDE

DMU-SC MODEL NUMBERS	SPOUT'S MAXIMUM FLOW OPENING AREA A		DMU'S FLOW OPENING AREA B		FLANGE WIDTH C		OVERALL WIDTH D		OVERALL LENGTH E		NUMBER OF MAGNETIC TUBES	APPROX. UNIT'S WEIGHT	
	SQ. IN	SQ. CM	SQ. IN.	SQ. CM	IN.	CM	IN.	CM	IN.	CM		2 - ROWS	LBS.
DMU-208-SC	16	103	64	20	12.25	31	20.25	51	43	109	7	252	114
DMU-210-SC	36	232	100	25	14.25	36	22.25	56	45	115	9	281	128
DMU-212-SC	64	413	144	30	16.25	41	24.25	61	47	120	11	303	138
DMU-214-SC	81	523	196	35	18.25	46	26.25	66	49	125	13	331	150
DMU-216-SC	100	645	256	40	20.25	51	28.25	71	51	130	15	361	164
DMU-218-SC	144	929	324	45	22.25	56	30.25	76	53	133	17	381	173
DMU-220-SC	169	1090	400	50	24.25	61	32.25	81	55	140	19	394	179

Specifications subject to change. Optional sizes available upon request.

Standard Features:

- 100% Stainless Steel Construction
- Rare Earth Neodymium-Iron-Boron magnet material
- 9" overall height between flanges
- UHMW stripper seals for max. magnet strength
- Operating temperatures up to 250°F
- Complete stripping action of magnetic tubes
- Two rows of 1" dia. magnetic tubes on 2" centers

Optional Features:

- Non-standard magnet tube spacing
- Multi-tier configuration
- Non-standard alloy Stainless Steel construction

- NEMA Enclosures for non-hazardous locations
- Manual "Quick-Clean" design
- Tramp metal collection trays
- Samarium-Cobalt magnet for higher operating temperatures
- Ceramic 8 magnet material for less severe tramp iron appls
- Non-standard electrical interface
- Non-standard Inlet/Outlet flange sizing
- Abrasive resistant and non-stick surface treatment
- Inlet and outlet transition adapters sized to customer specs
- Mechanical valve switch to eliminate electrical requirements

Magnetic Products Inc.

P.O. Box 529 • 683 Town Center Dr. • Highland, MI • 48357

TOLL FREE: 800-544-5930 • 248-887-5600

FAX: 248-887-6100

EMAIL: info@mpimagnet.com

www.mpimagnet.com

DISTRIBUTED BY: