



Liquid Finger Trap Magnet

Series: LFT-REN-QC

APPLICATION

MPI's LIQUID FINGER TRAP MAGNETS (LFT-REN-QC Series) are designed to protect product flow lines and pumps by magnetically removing ferrous contaminants from the product's flow stream. LFT-Series trap magnets provide purification of liquids and wet separation for a variety of industries; including but not limited to the chemical, food processing and paper mill industries.

OPERATION

The tramp metal collects at the downstream side of the magnetic tubes, preventing tramp metal "wash-off" during the continuous product flow around and through the magnetic field without restricting the product flow.

Additionally, non-magnetic particles are trapped, by gravity, in a sump beneath the magnetic element.

STANDARD FEATURES:

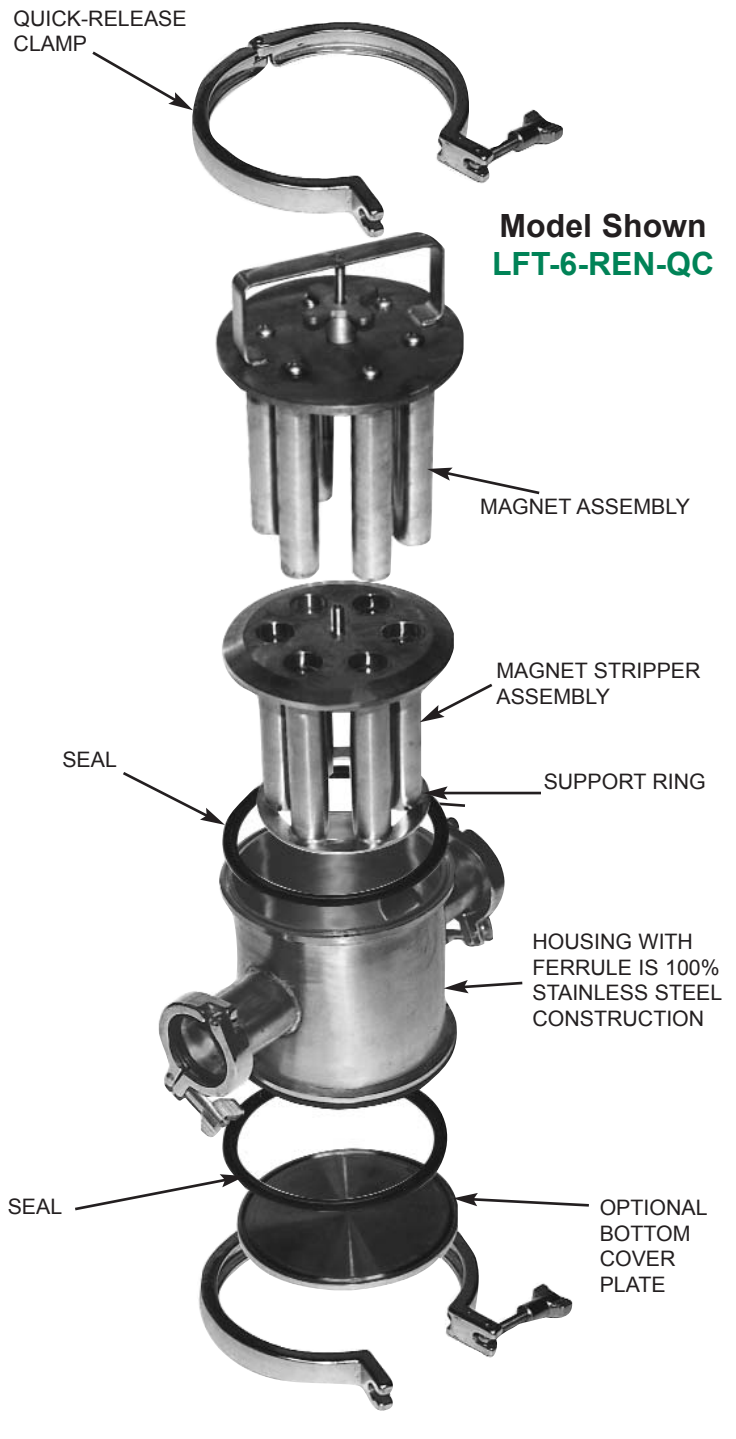
- Powerful Ceramic magnet material
- Stainless Steel construction
- For use in product streams up to 75 psi*
- Quick-release clamps provide easy removal for inspection and cleaning of the magnetic element

* All LFT-Series Trap magnets are factory pressure tested at 75 psi

OPTIONAL FEATURES:

- High Energy Rare Earth magnet material
- Other line connection types available
- High pressure housing design
- Non-standard line sizes

QUICK-RELEASE
CLAMP



Model Shown
LFT-6-REN-QC

MAGNET ASSEMBLY

MAGNET STRIPPER
ASSEMBLY

SEAL

SUPPORT RING

HOUSING WITH
FERRULE IS 100%
STAINLESS STEEL
CONSTRUCTION

SEAL

OPTIONAL
BOTTOM
COVER
PLATE

Got a question about Metal Control
or Material Handling Products...

Ask the
**Magnet
Man**

www.magnetmanusa.com



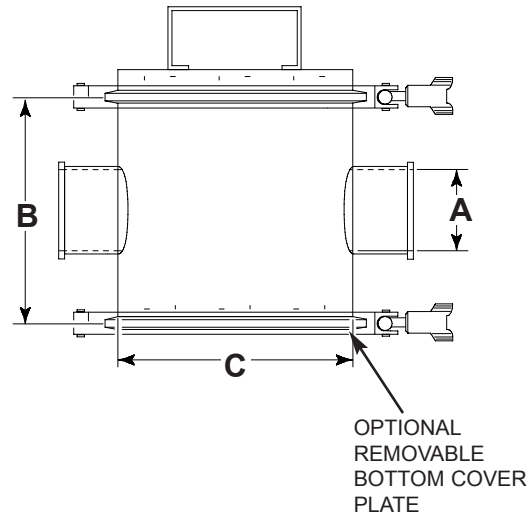
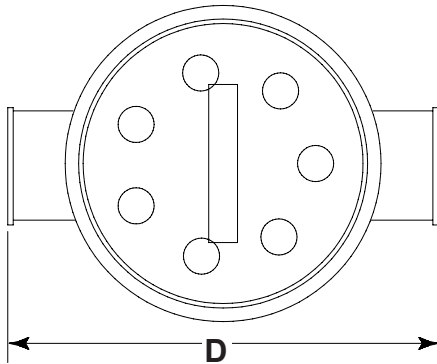
Magnetic Products, Inc.

Providing Magnetic Solutions for the
Material Handling Industry

800-544-5930



Providing Magnetic Solutions For the Material Handling Industry



LFT-SERIES SELECTION GUIDE

LFT MODEL NUMBERS	PIPE DIA. "A"		HEIGHT DIM. "B"		DIAMETER "C"		WIDTH DIM. "D"		APPROX. UNIT'S WEIGHT		NO. OF MAGNETIC TUBES
	IN.	MM	IN.	MM	IN.	MM	IN.	MM	LBS.	KG	
LFT-2-REN-QC	2	51	6	152	6	152	9	279	26	12	5
LFT-3-REN-QC	3	76	8	203	8	203	9	305	37	17	7
LFT-4-REN-QC	4	102	8	203	8	203	9	381	50	23	7

Note: Specifications subject to change. Optional sizes available upon request.

CAPACITIES IN GALLONS PER MINUTE & LITERS PER SECOND

LFT TRAP SIZE		FLUID AND STRAINED PRODUCT FLOW		FIBROUS AND CRUSHED PRODUCT FLOW		VISCOUS OR HEAVY PRODUCT FLOW	
IN.	MM	GPM	LPS	GPM	LPS	GPM	LPS
2	51	1 – 64	.06 – 4.0	1 – 53	.06 – 3.3	1.0 – 33	.06 – 2.1
3	76	65 – 132	4.1 – 8.3	54 – 116	3.4 – 7.3	34 – 77	2.1 – 4.9
4	102	133 – 154	8.4 – 9.7	117 – 132	7.4 – 8.3	78 – 105	4.9 – 6.6

Note: Capacities can vary, depending on tramp metal size, velocity and viscosity.

75 psi maximum line pressure recommended.

Magnetic Products Inc.

P.O. Box 529 • 683 Town Center Dr. • Highland, MI • 48357

TOLL FREE: 800-544-5930 • 248-887-5600

FAX: 248-887-6100

EMAIL: info@mpimagnet.com

www.mpimagnet.com

DISTRIBUTED BY: