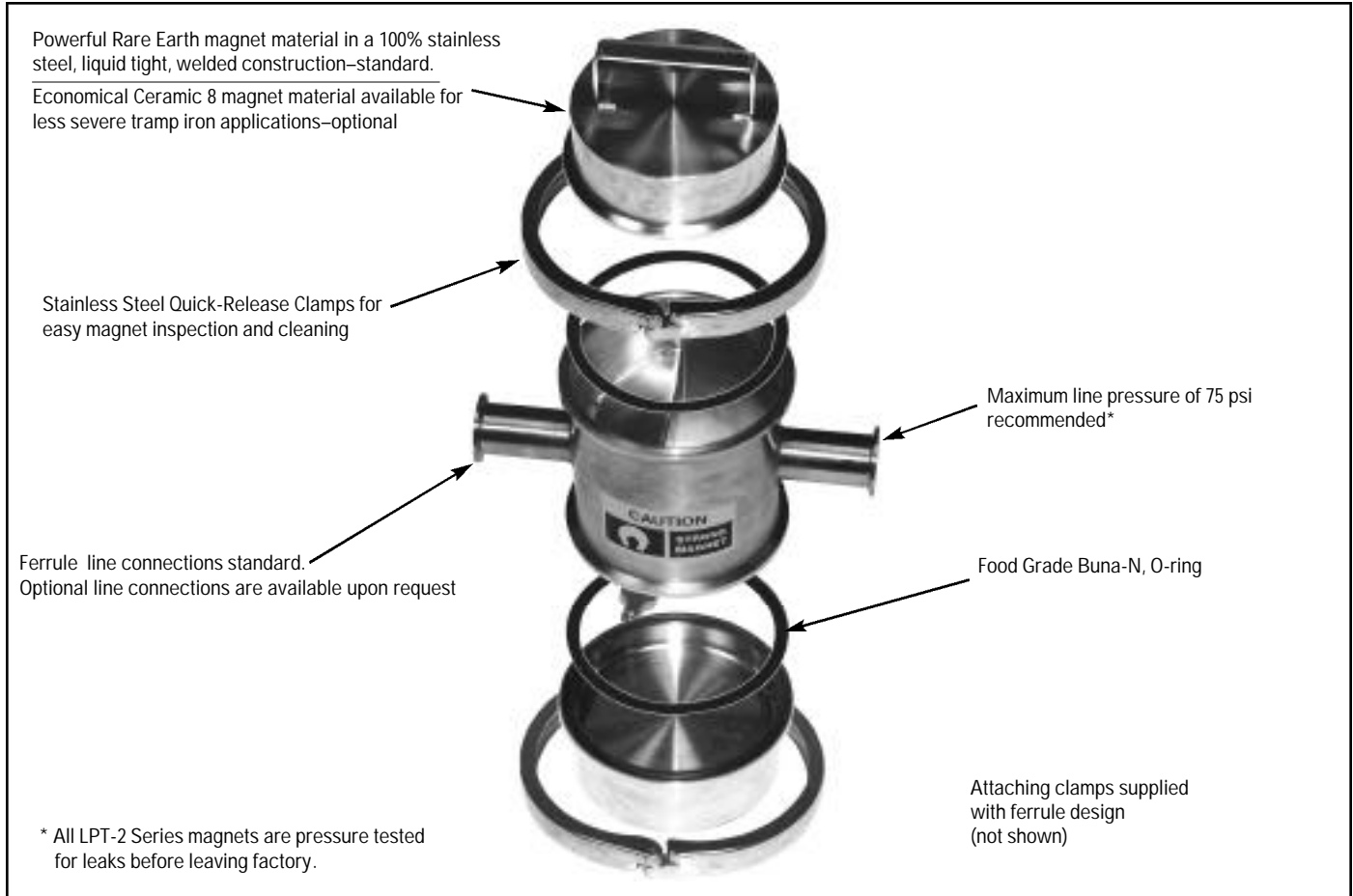


Liquid Plate Magnetic Trap

Model Series: LPT-2



APPLICATION:

MPI's LPT-2 Series Trap Magnets are designed to filter product flows and protect pumps by removing ferrous contaminant from liquid and slurry product streams. LPT-2 Series Trap Magnets provide purification of liquids and tramp metal separation for a variety of wet food processing industries, from fluid and strained product flows, to viscous and heavy fibrous product streams.

OPERATION:

A baffle within the trap magnet directs the product flow towards the magnetic field, assuring that the ferrous contaminant comes into contact with it. The area within the trap is enlarged to slow the product stream and allow increased exposure to the magnetic field. Suggested placement of the magnetic trap is in horizontal lines.

After the product flow is terminated, the magnets are easily cleaned by removing the quick-release clamps and separating the magnets from the housing and hand-cleaning the magnet's surface.

STANDARD FEATURES:

- Powerful Rare Earth permanent magnet material
- 100% stainless steel fabrication
- Quick-release clamps for easy inspection and cleaning
- Efficient in products streams up to 75 psi
- Operating temperature up to 250° F with rare earth magnet material and 450° F with ceramic 8
- Line sizes from 1½" to 6" dia.

OPTIONAL FEATURES:

- Bevel seat, pipe thread, or welded line connections
- Economical Ceramic 8 magnet material for less severe tramp iron applications
- Alnico magnet material for higher operating temperatures



Magnetic Products, Inc.
*Providing Magnetic Solutions
for the Material Handling Industry*

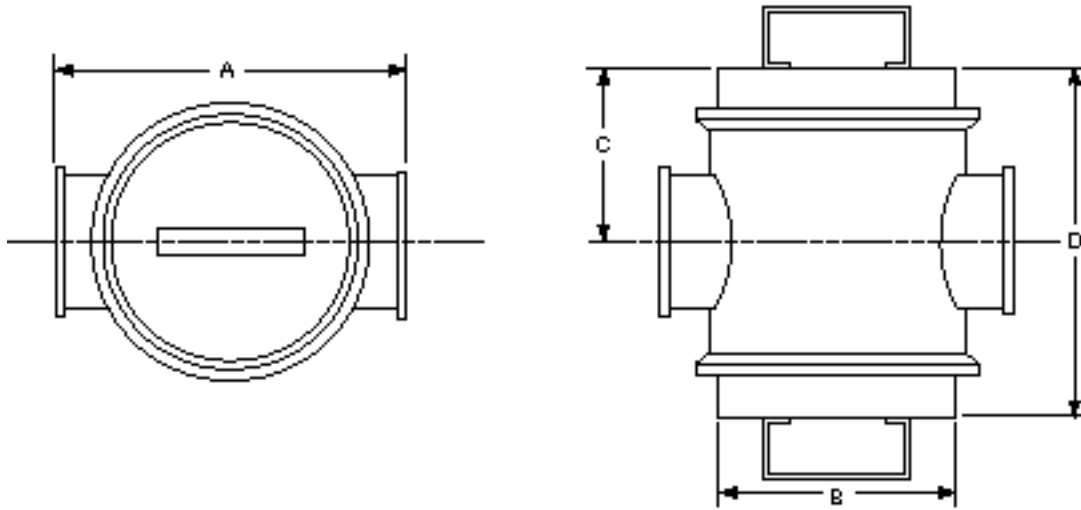


Providing Magnetic Solutions For The Material Handling Industry

SELECTION:

For the proper LPT-2 Series magnet for your application, refer to the chart below, which rates the trap magnet on the basis of capacity flow rates in relation to the type of product being conveyed.

As a leader in the development of magnetic separation equipment, MPI is committed to the continuous design and performance improvements of their products. This commitment to excellence is made to you with engineering services and free product testing to assure you are getting the proper magnetic separator for your application and our customer service staff is willing and able to assist you with your application needs. For more information please call your local sales representative—listed below, or call our factory.



LPT2 – SERIES SELECTION GUIDE

LPT2 - MODEL NUMBER	PIPE DIAMETER		WIDTH "A"		DIAMETER "B"		PIPE CENTER "C"		HEIGHT "D"		APPROX. UNIT'S WEIGHT	
	IN.	MM	IN.	MM	IN.	MM	IN.	MM	IN.	MM	LBS	KG
LPT2-15-REN	1½	38	10	254	7½	190	4¼	108	8½	216	24	10.9
LPT2-20-REN	2	51	10	254	7½	190	4¼	108	8½	216	24	10.9
LPT2-25-REN	2½	64	10	254	7½	190	4¼	108	8½	216	24	10.9
LPT2-30-REN	3	76	12	305	9¼	248	7¾	187	10¼	273	44	20.0
LPT2-40-REN	4	102	12	305	9¼	248	7¾	187	10¼	273	44	20.0
LPT2-60-REN	6	152	16	406	12½	318	8¾	213	12¼	324	80	36.3

Note: Specifications subject to change. Optional sizes available upon request.

CAPACITIES IN GALLONS / LITERS PER MINUTE

LINE SIZE		PRODUCT FLOW CLASSIFICATIONS:							
		FLUID & STRAINED		FIBROUS & CRUSHED		VISCOUS OR HEAVY		VISCOUS & FIBROUS	
IN.	MM	GPM	LPM	GPM	LPM	GPM	LPM	GPM	LPM
1.5	38	190	720	140	530	80	300	40	150
2.0	51	190	720	140	530	80	300	40	150
2.5	54	190	720	140	530	80	300	40	150
3.0	76	310	1175	220	830	125	475	60	230
4.0	102	310	1175	220	830	125	475	60	230
6.0	152	450	1700	320	1200	180	680	90	340

Capacities can vary, depending on tramp metal size, velocity and viscosity.



Magnetic Products Inc.

P.O. Box 529 • 683 Town Center Dr. • Highland, MI • 48357

TOLL FREE: **800-544-5930 • 248-887-5600**

FAX: **248-887-6100**

EMAIL: **info@mpimagnet.com**

PRODUCT BULLETIN GROUP: 102
LPT2-SERIES, REV. 05/00
© COPYRIGHT 1997 MPI

DISTRIBUTED BY: