



# Pneumatic Line Magnet Quick Clean *Series: PLM-QC*

100% Stainless Steel  
Enclosed Design

Closed cell food grade gasket  
for positive sealing



(6) Quick-Release  
clamps for positive  
sealing of access door

Quick-Release Magnet Lock allows for easy and safe removal of magnet. After magnet is removed collected tramp iron is demagnetized and falls off into container

**Model Shown**  
**PLM-3-QC**

**Application:** MPI's QUICK CLEANING PNEUMATIC LINE MAGNETS (PLM-QC Series) are designed for use in dilute-phase pneumatic processing systems. Pneumatic Line Magnets effectively remove inbound tramp metal contaminants from product streams conveyed by air in both horizontal and vertical processing and transfer lines. Typical applications include powder or granular food products, pharmaceuticals, plastics and chemicals conveyed at high speeds in low density/high air systems.

**Operation:** MPI's Pneumatic Line Magnets easily install in an existing product conveying line, and are designed to maintain a continuous flow through the housing with no reduction in product velocity. The nose cone diverts the product stream over the stainless steel sleeve assemblies, which are ribbed at the magnetic pole areas to maximize tramp metal retention as the product flows over and around the sleeve assemblies. Collected tramp iron is cleaned by releasing the magnet's access door and swinging it open from the housing. Then release and turn the magnet's handle dis-engages it from its sleeve and the collected tramp iron falls off.

Got a question about Metal Control  
or Material Handling Products...

Ask the  
**Magnet  
Man**



[www.magnetmanusa.com](http://www.magnetmanusa.com)

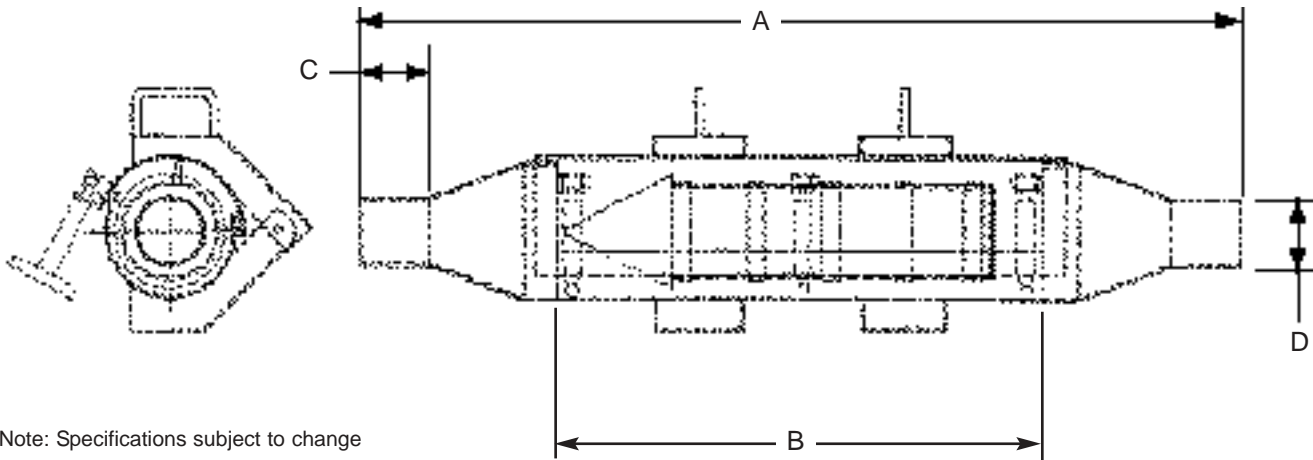
## Magnetic Products, Inc.

Providing Magnetic Solutions for the  
Material Handling Industry

800-544-5930



**Providing Magnetic Solutions  
For the Material Handling Industry**



Note: Specifications subject to change

**PLM-QC - SERIES SELECTION GUIDE**

PLM-QC MODEL NUMBER	OVERALL LENGTH "A"		DOOR LENGTH "B"		TUBE LENGTH "C"		SPOUT DIAMETER "D"		APPROX. UNIT WEIGHT	
	IN.	MM	IN.	MM	IN.	MM	IN.	MM	LBS.	KG
PLM-3-QC	38.0	965	24.0	610	3.0	76	3.0	76	72	33
PLM-4-QC	38.0	965	24.0	610	3.0	76	4.0	102	79	36
PLM-5-QC	38.0	965	24.0	610	3.0	76	5.0	127	93	42
PLM-6-QC	38.0	965	24.0	610	3.0	76	6.0	152	106	48
PLM-8-QC	50.0	1270	36.0	914	4.5	114	8.0	203	155	70
PLM-10-QC	50.0	1270	36.0	914	4.5	114	10.0	254	175	80

**Standard Features:**

- Exclusive, removable magnet element for quick, easy cleaning
- Permanent Ceramic 8 magnet material—will not de-magnetize
- 100% stainless steel enclosed design
- All stainless steel product flow area
- 400 Series stainless steel pole areas
- Closed cell food grade gasket to prevent product leakage
- And (6) quick-release clamps for positive sealing of access door gasket
- Rugged all-welded construction

**Optional Features:**

- High-Energy Rare Earth magnet material
- Non-standard alloy stainless steel construction
- Mounting flanges and matching companion flanges
- Special pipe diameters
- Morris-type couplings

**-Custom Sizes & Configurations Available-**

For more information, please contact your local sales representative or our customer service representatives at 1-800-544-5930 or [info@mpimagnet.com](mailto:info@mpimagnet.com).

**Magnetic Products Inc.**

P.O. Box 529 • 683 Town Center Dr. • Highland, MI • 48357

TOLL FREE: 800-544-5930 • 248-887-5600

FAX: 248-887-6100

EMAIL: [info@mpimagnet.com](mailto:info@mpimagnet.com)

[www.mpimagnet.com](http://www.mpimagnet.com)

DISTRIBUTED BY: